

MARINE CONSTRUCTION NOTICE



September 18, 2020

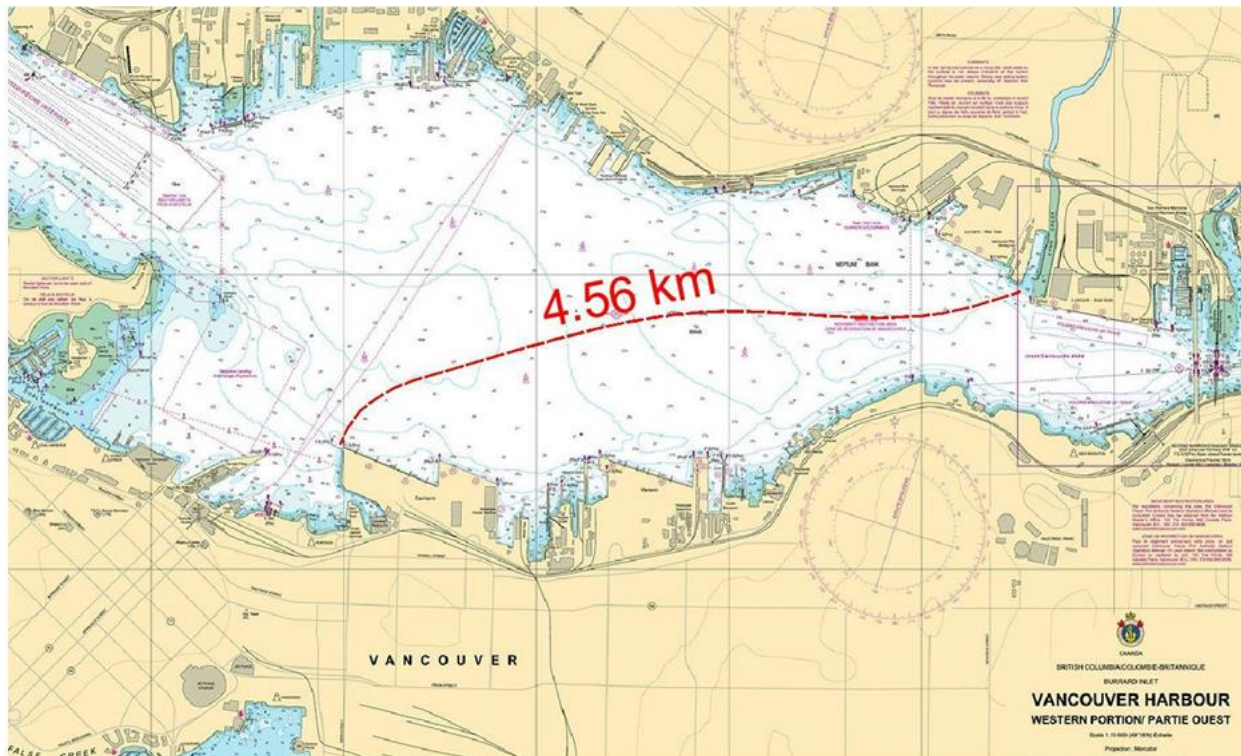
Re: **Centerm Expansion Project and South Shore Access Project** **Notice of upcoming caisson installation at Centerm Berth 6**

As part of the Vancouver Fraser Port Authority's ("port authority") Centerm Expansion Project and South Shore Access Project, Centennial Expansion Partners ("CXP") will install two caissons associated with the Western expansion of the Centerm Container Terminal. Two floating concrete caissons will be towed across Vancouver harbour during the week of September 21, 2020 and be installed immediately West of Centerm Berth 6.

About the caisson towage and installation:

Two tug Class 5 vessels will tow the caissons from the North Side of the Burrard Inlet South-West across the harbour to Centerm Berth 6 as shown in the diagram below. (See over for diagram of caissons). Assist tugboats or dozer boats will assist with caisson arrival. Two marine derricks will be used to position, sink, and install the caissons. Following installation of the first caisson, the second will be towed to Centerm using the same vessels and route. After completing installation of both caissons, divers will remove submerged drain covers.

Figure 1: Approximate caisson voyage route



Marine traffic impact during caisson installation:

- CXP's Contractor VanPile will issue a Notice to Mariners while the caissons are under tow. Notice will request a dead slow, zero wash and caution during the caisson delivery, sinking and installation operation.
- Before departure, caissons will be fitted with statutory navigation lights and, floating trailing lines will be fitted to the tow points on the trailing end.
- A vessel with a film crew, and possibly a drone will also be following the caisson while it is being transported to the terminal.
- A "slow bell" is requested during working hours to ensure crew safety.
- Refer to Figure 3 below for CXP's Contractor Safe Zone. CXP will be working in/around the Buffer Zone during Caisson delivery and installation but will pull back to Green Areas for Centerm vessel arrival/departures.
- CXP will actively monitor VHF Channel 12 for any vessels bound for Centerm.
- Advance notification of Diving activities will be issued to the VFPA Harbour Master, VFPA Marine Operations and MCTS Victoria.

Work days and hours:

- CXP's marine works are conducted up to 24 hours per day, 7 days per week.
- Each caisson will take approximately 4-6 hours to tow to Centerm.
- Installation of each caisson is anticipated to take one week.

Thank you

CXP is committed to conducting our marine construction activities in a manner that minimizes, to the greatest extent possible, disruptions to marine vessel operators and service providers, port tenants and local businesses. We apologize for any inconvenience in advance and thank you for your patience and understanding as we undertake construction of this important Project for the port authority.

Contact information:

For more information or if you have questions or concerns regarding CXP's marine work, please contact CXP at 604-910-5785 or zstrand@cxp-jv.com

For more information or enquiries regarding the Centerm Expansion Project and South Shore Access Project, visit www.portvancouver.com/centerm-expansion or contact the port authority at 604-665-9563 or centerm.expansion@portvancouver.com.

Sincerely,

CXP Centerm Expansion Project and South Shore Access Project Team

Figure 2: Floating caisson



Figure 3: Contractor Safe/Buffer Zone

