



COAST GUARD

FISHERIES AND OCEANS CANADA

VANCOUVER MARINE COMMUNICATIONS AND TRAFFIC SERVICES

PHONE: 604-666-6011 FAX: 604-666-8453

EMAIL: RMIC-PACIFIC@PAC.DFO-MPO.GC.CA

NOTICE TO SHIPPING REQUEST

Week of: May 16, 2011

Organization name: Kiewit Flatiron General Partnership
Contact number: (604) 629-5453
On site contact: Jim Hindes or George Kyriakelis
On site contact numbers: (604) 209-2548 or (604) 202-2023

Location of Activity

Activity for the week of May 16th will occur west of the existing Port Mann Bridge in all construction zones.

Dates and Hours of Operation

Support barges will be moored in zone 1, zone 2, and zone 3. These barges will be operating 24 hours per day for the entire week.

Activity Taking Place and Resulting Restrictions

The DB Bremerton will be alternating from the North and South sides of the N1 footing, working on the bridge deck erection. A barge will be positioned accordingly by the DB Bremerton for support services, as well as an additional barge on the north side of the N1 finger.

There will be barges located at pier N2, N3, and N4 throughout the week to assist in the pier construction.

The North working passage will be closed due to support barges.

The South working passage is obstructed by 7 tie down piles and requires all users are to proceed with caution.

Vessels Participating and Support Vessels

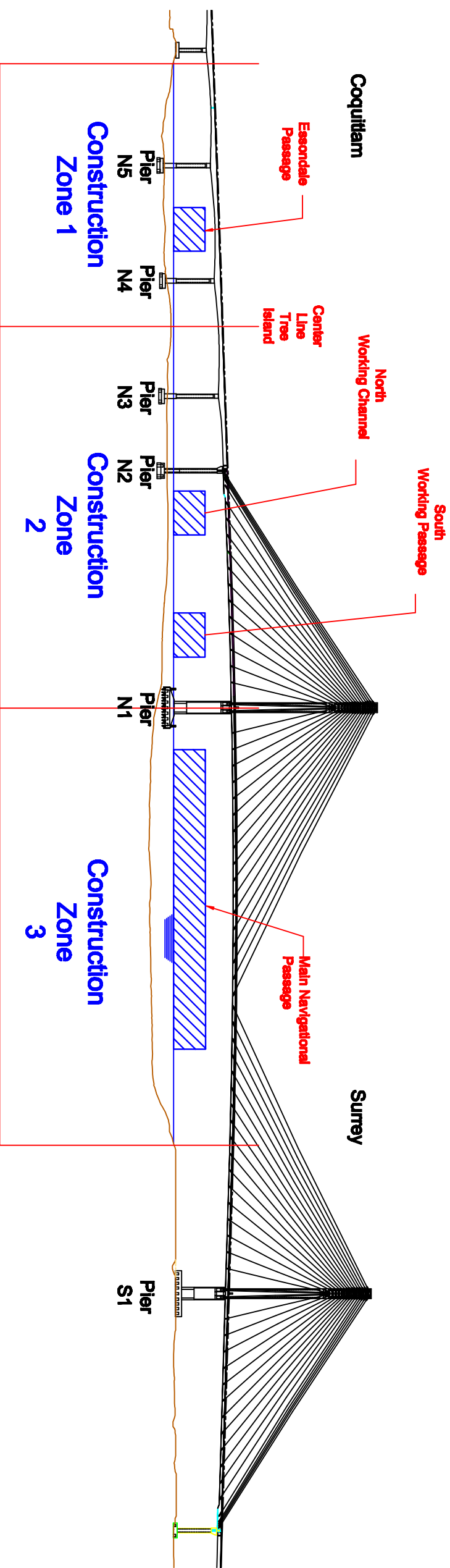
Vessel Assist: Vessel Katzie Pride
(604) 779-3789 and monitoring VHF channel 64A
D.B. Bremerton and Scows Towing Tug.

VHF Channel to be monitored (if applicable)

Emergency: 16
Working: 6

Special Requests and Additional Information

No wake zones will be designated 200 meters upstream and downstream of all marine construction vessels.

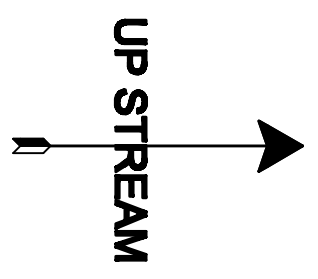


Marine Construction Update

Week Of: May 16th, 2011

Day	Zone 1		Zone 2		Zone 3	
	Time	Activity	North Working Passage	South Working Passage	Time	Activity
Monday	24Hr	RM	Closed	24 Hr	RM	RM
Tuesday	24Hr	RM	Closed	24 Hr	RM	RM
Wednesday	24Hr	RM	Closed	24Hr	RM	RM
Thursday	24Hr	RM	Closed	24Hr	RM	RM
Friday	24Hr	RM	Closed	24Hr	RM	RM
Saturday	24Hr	RM	Closed	24Hr	RM	RM
Sunday	24Hr	RM	Closed	24Hr	RM	RM

- Open: Channel is Open to all traffic
- Closed: Channel is Closed for the time stated
- RM: Channel is open with Restricted Manueverability due to construction activities



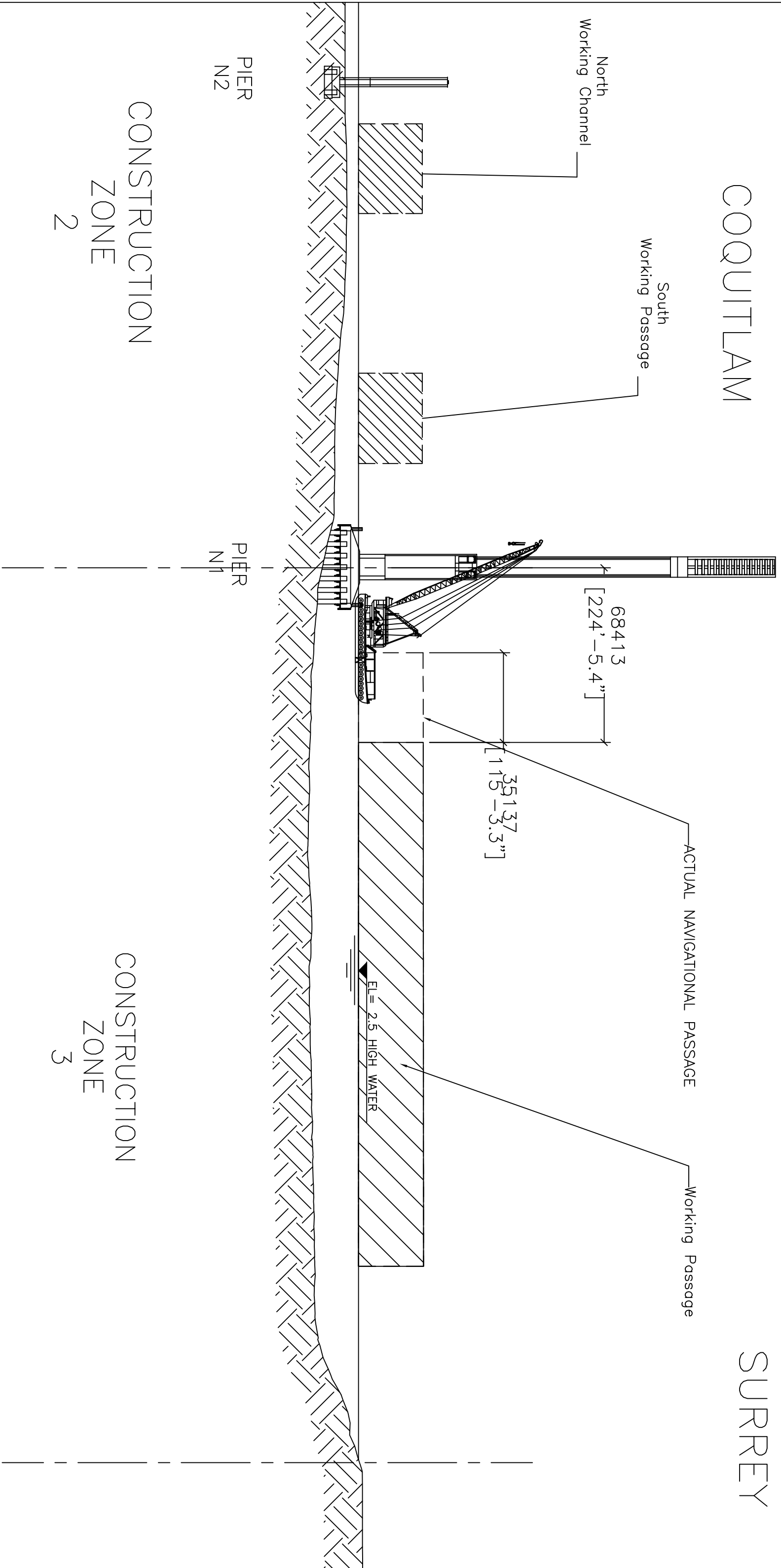
PORT MANN BRIDGE
 JUNCTION STAGING FOR NAVIGATIONAL PASSAGE
 CONSTRUCTION WORKS



N1 STABILIZER CONSTRUCTION
MARINE ELEVATION

COQUITLAM

SURREY



CONSTRUCTION
ZONE
2

CONSTRUCTION
ZONE
3

PIER
N2

PIER
N1

North
Working
Channel

South
Working
Passage

ACTUAL NAVIGATIONAL PASSAGE

Working Passage

EL = 2.5 HIGH WATER

CONSTRUCTION
ZONE
2

2



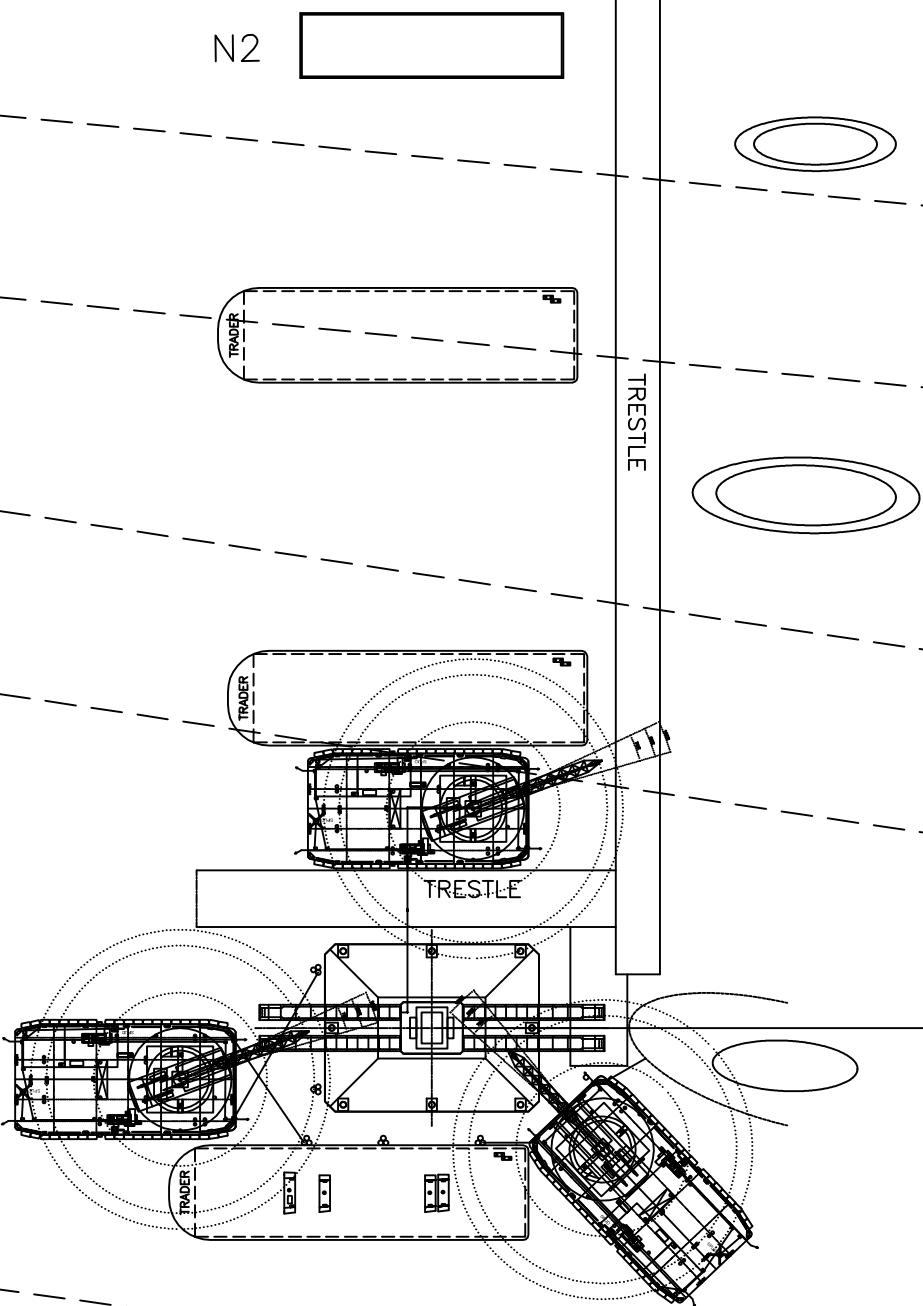
CONSTRUCTION
ZONE
3

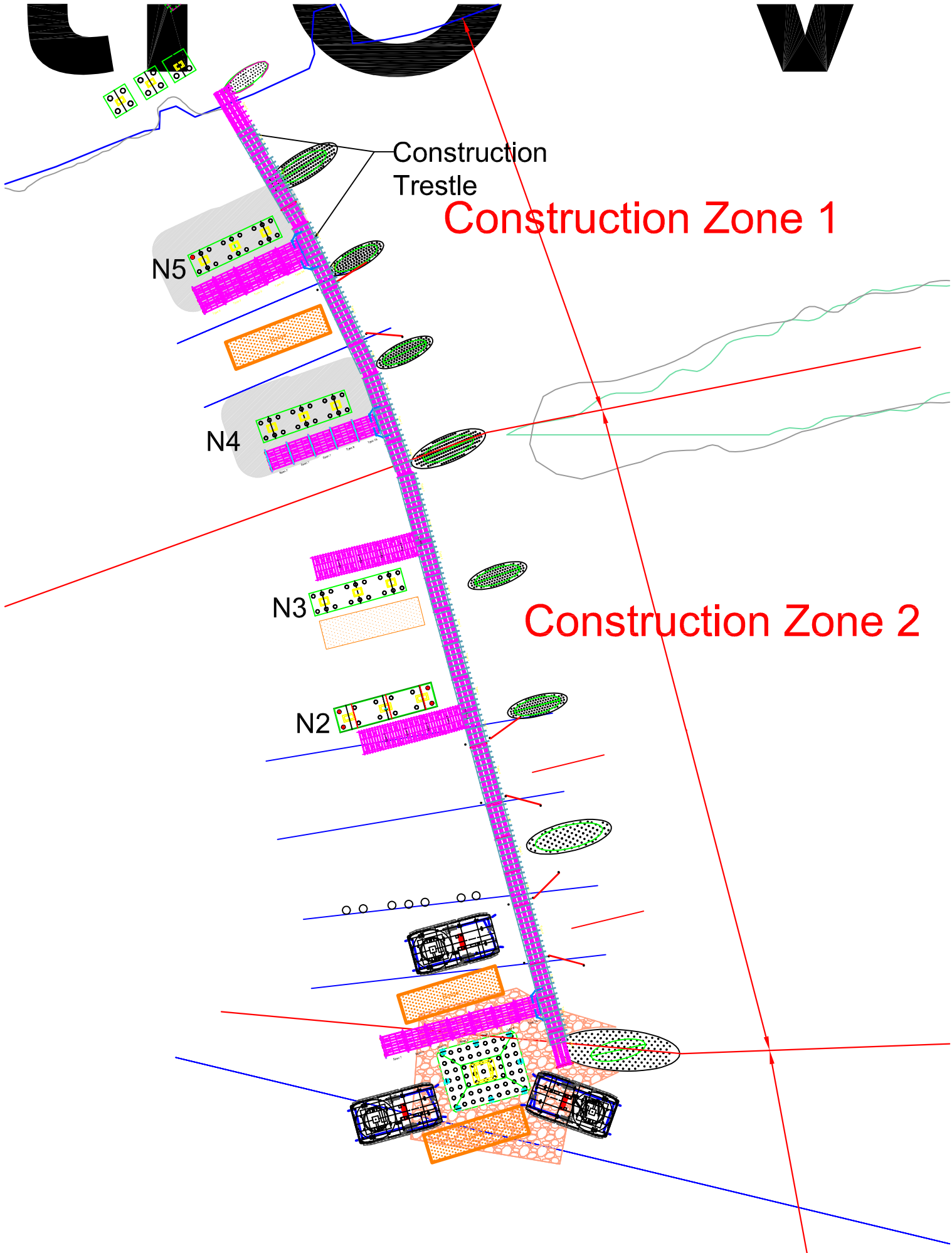
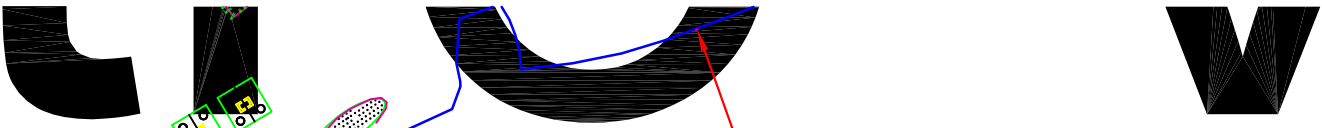
65,602'
[215-2.7"]

28,172'
[924-3.3"]

MAIN
NAVIGATIONAL
PASSAGE

N1 STABILIZER CONSTRUCTION
MARINE PLAN VIEW





Construction
Trestle

Construction Zone 1

N5

N4

N3

N2

Construction Zone 2