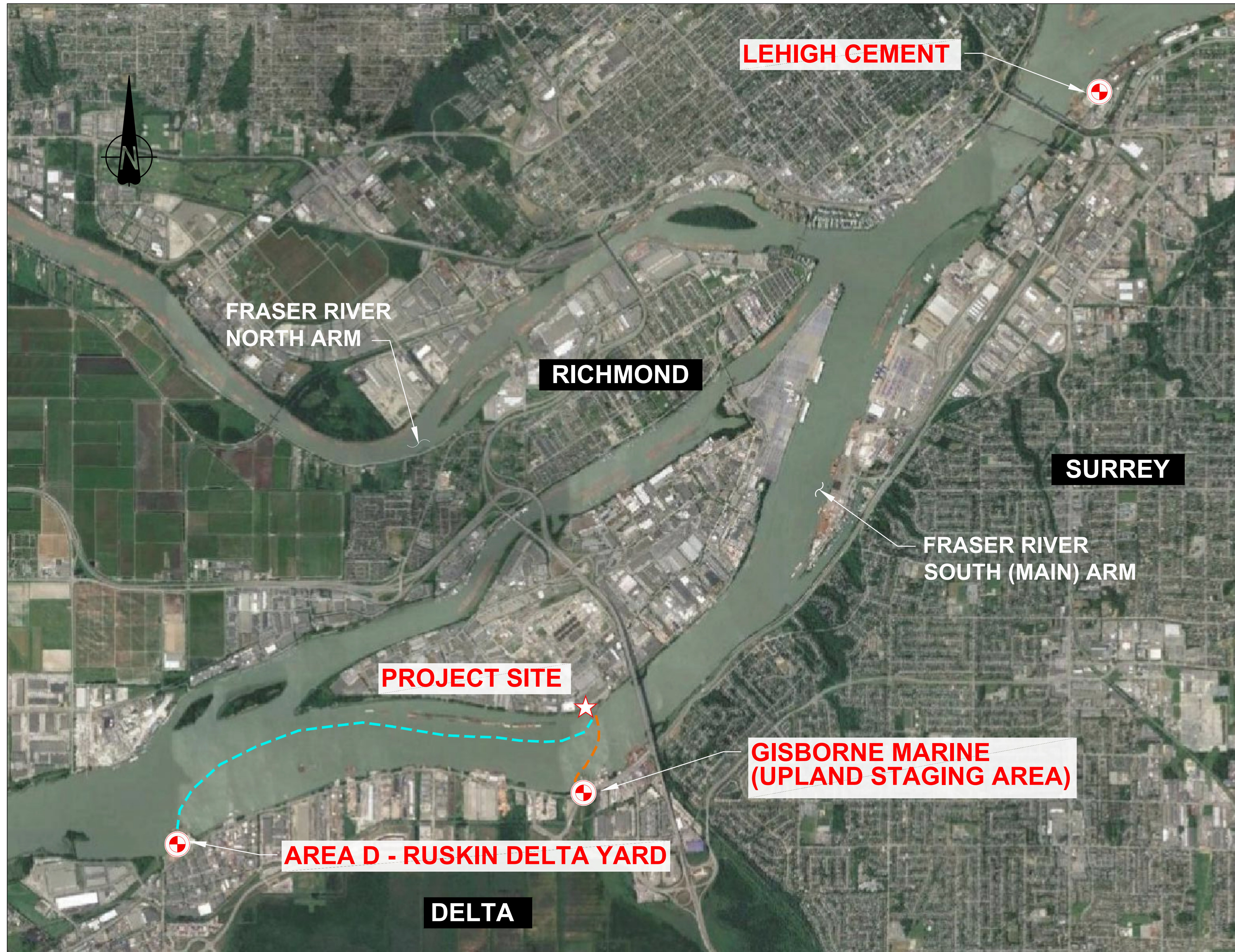
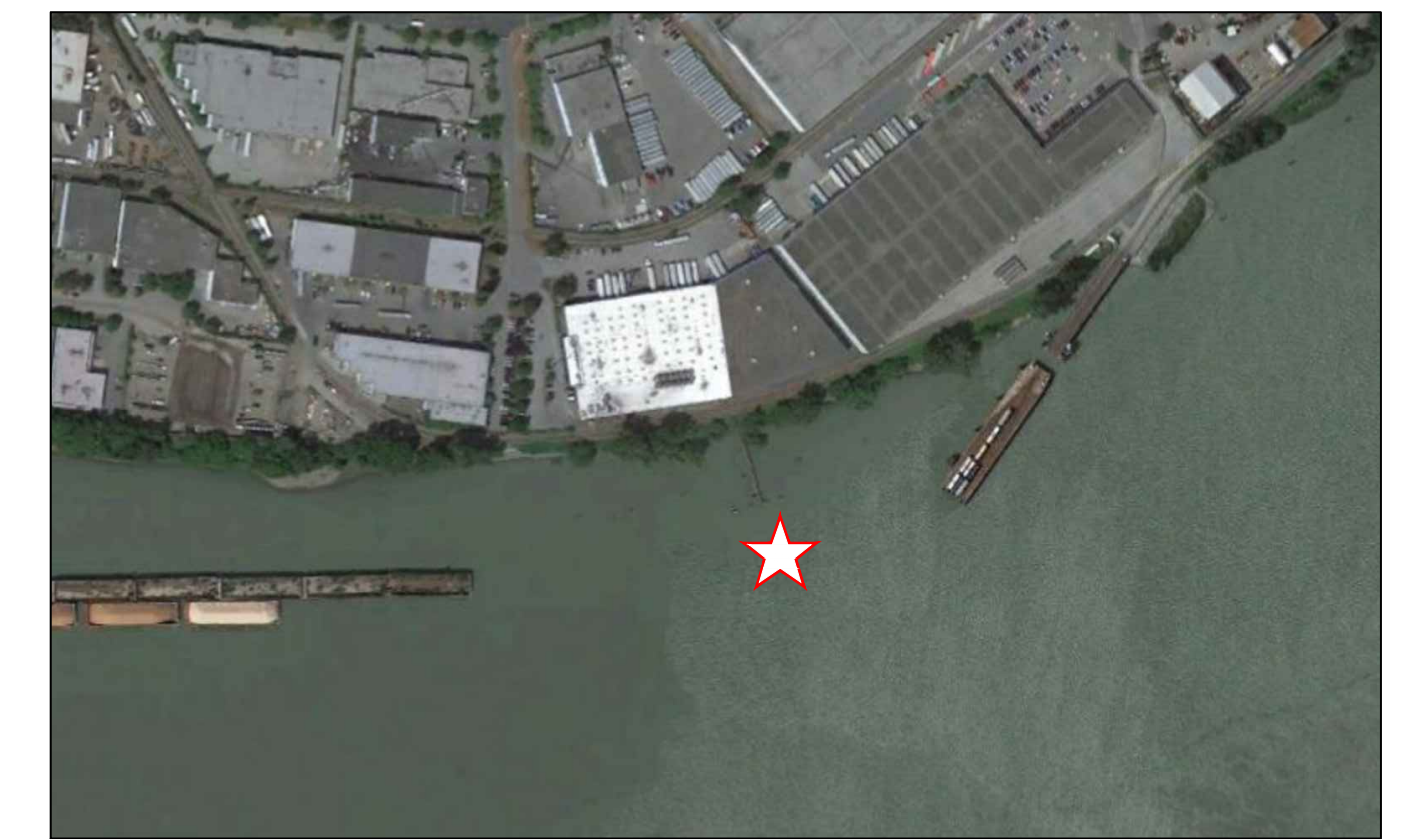


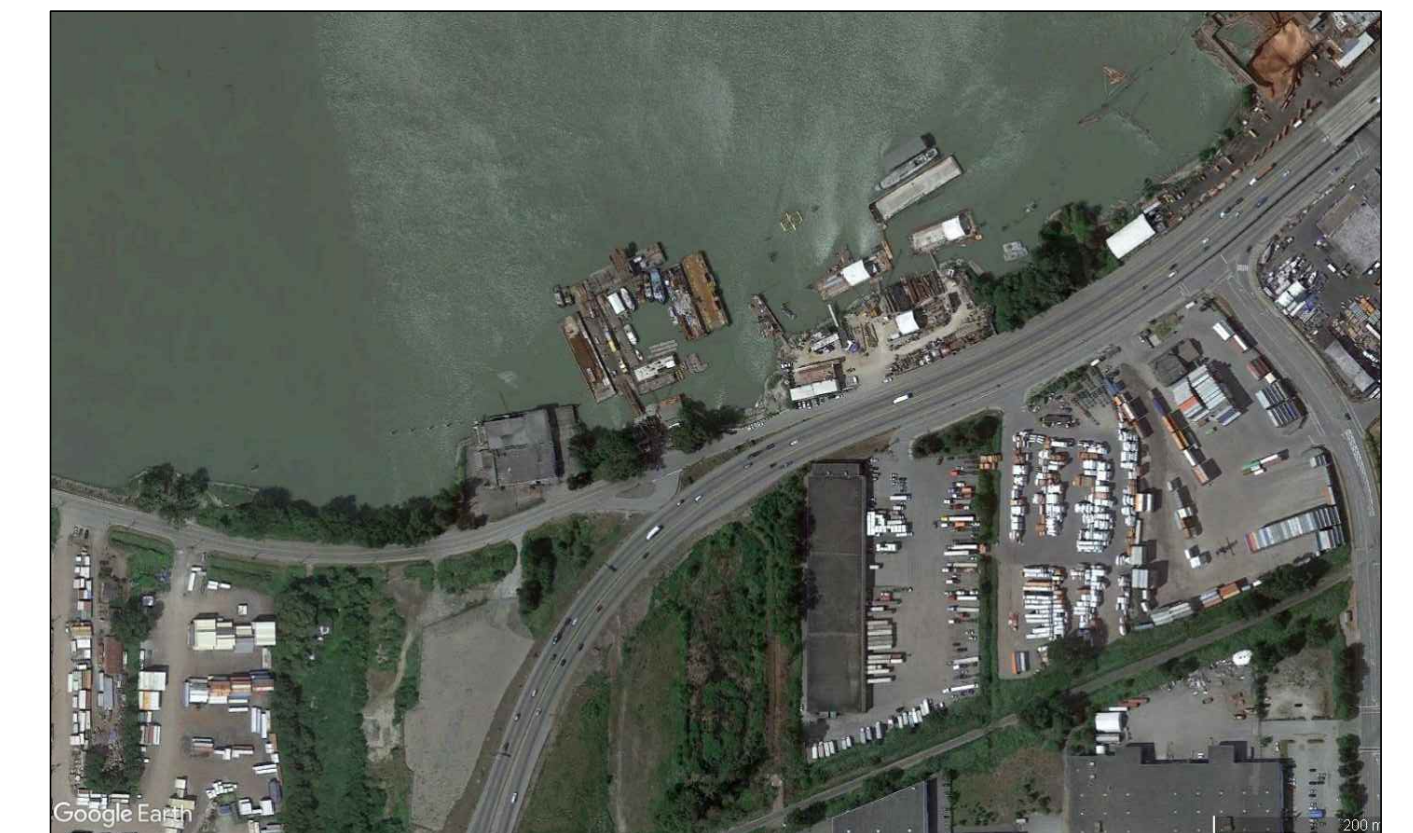
Filename: C:\Users\Msi007\OneDrive\20350-Ruskin Waste Water\20350-00-103.dwg - 103  
 Last Saved: Apr. 22/20 3:22pm Plotted: Apr. 22/20



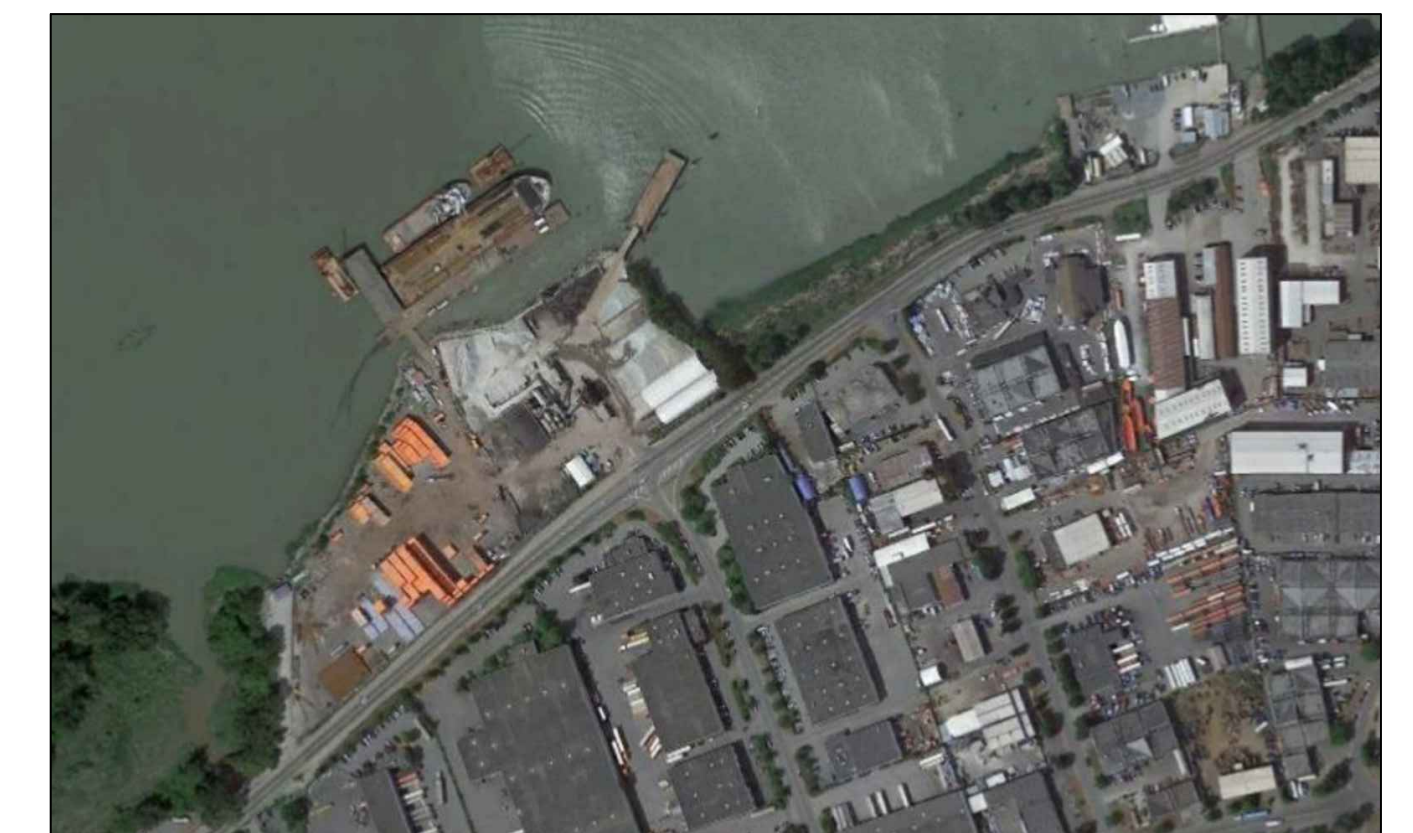
PLAN  
1:20,000



**PROJECT SITE**



**GIBBORNE MARINE**



**AREA D - RUSKIN DELTA YARD**

- - - - CONSTRUCTION MATERIAL TRANSFER ROUTE  
GIBBORNE MARINE TO PROJECT SITE  
(APPROXIMATELY 700 METRES)
- - - - CREW STAFF ACCESS ROUTE  
AREA D - RUSKIN DELTA YARD  
(APPROXIMATELY 4.2 KILOMETRES)

**REVISION IN PROGRESS**

No.	DATE	ISSUE / REVISIONS	DRAWN	CHK'D	DESIGN	CHK'D	APP'D
P1		ISSUED FOR REVIEW	RM		RT		

No.	DATE	DESCRIPTION	DRAWN	CHK'D	DESIGN	CHK'D	APP'D
		ISSUE / REVISIONS					

**PRELIMINARY**  
DO NOT USE FOR CONSTRUCTION  
Last Saved: Apr. 22/20 3:22pm

MGR

CLIENT



PROJECT

ANNACIS ISLAND WASTEWATER  
TREATMENT PLANT EXPANSION PROJECT



TITLE

MARINE ACCESS PLAN

DRAWING SCALE	PROJECT NUMBER	DRAWING NUMBER	REV.
SHOWN	20350	00-103	P1